



# Media Release

**Date:** July 4, 2022

For immediate release

6:30 pm

## Evacuation Alert issued for properties along Lardeau River

Nelson, BC: The Regional District of Central Kootenay (RDCK) Emergency Operations Centre (EOC) has issued an Evacuation Alert for 25 properties along the Lardeau River, in Electoral Area D, south from Poplar Creek to the confluence of the Lardeau River and Duncan River due to the potential for flooding. See the list of affected properties.

14940 HWY 31	16412 HWY 31
14146 HWY 31	16414 HWY 31
14142 HWY 31	13544 HWY 31
14130 HWY 31	16420 HWY 31
15904 HWY 31	16422 HWY 31
15924 HWY 31	16424 HWY 31
13825 HWY 31	16430 HWY 31
16340 HWY 31	13504 HWY 31
16395 HWY 31	13440 HWY 31
209 LARDEAU RIV RD	16480 HWY 31
16394 HWY 31	16471 HWY 31
208 LARDEAU RIV RD	16453 POPLAR CREEK FSR
16410 HWY 31	

See maps of the Evacuation Alert area below.

Unsettled weather is occurring across southern British Columbia with the potential for heavier rainfall and thundershowers across the region. The BC River Forecast Centre modelling suggests if there is a significant amount of rain, combined with snowmelt from a record year snow pack, there is potential for a 100-year flood event within the next 24 to 48 hours

**At this time residents or visitors within the area are not required to evacuate**, however the RDCK advises people to remain vigilant and be prepared to leave the area at a moment's notice. It is recommended to prepare an emergency kit and ensure preparedness, including moving pets and livestock to a safe area, in the event the

situation worsens and an Evacuation Order is enforced. Part of your plan should include where you can go if evacuated.

Yesterday, the BC River Forecast Centre issued a high streamflow advisory for the West Kootenay area. River levels are rising or are expected to rise rapidly and will approach or may exceed the river banks. Flooding of areas adjacent to affected waterbodies may occur. The RDCK warns everyone to stay away from the edges of watercourses and report any erosion or flooding to the [Provincial Emergency Coordinator Centre](#) at 1.800.663.3456

Updates or changes to the Evacuation Alert will be provided via the [RDCK website](#), [Facebook](#) and [Twitter](#) as more information becomes available. For details on emergency preparedness, along with other resources, please visit [www.rdck.ca/eocinfo](http://www.rdck.ca/eocinfo). The RDCK EOC public inquiry line is 250.352.7701 and is active between 8:00 am and 4:00 pm.

#### **What residents can do to be prepared:**

- Sandbags and sand are available for residents at any of the locations listed on the RDCK website: [www.rdck.ca/befloodprepared](http://www.rdck.ca/befloodprepared)
- If you have livestock or large animals, now is the time to consider moving them.
- If you are not physically able to evacuate yourself, contact the EOC public inquiry line at 250.352.7701

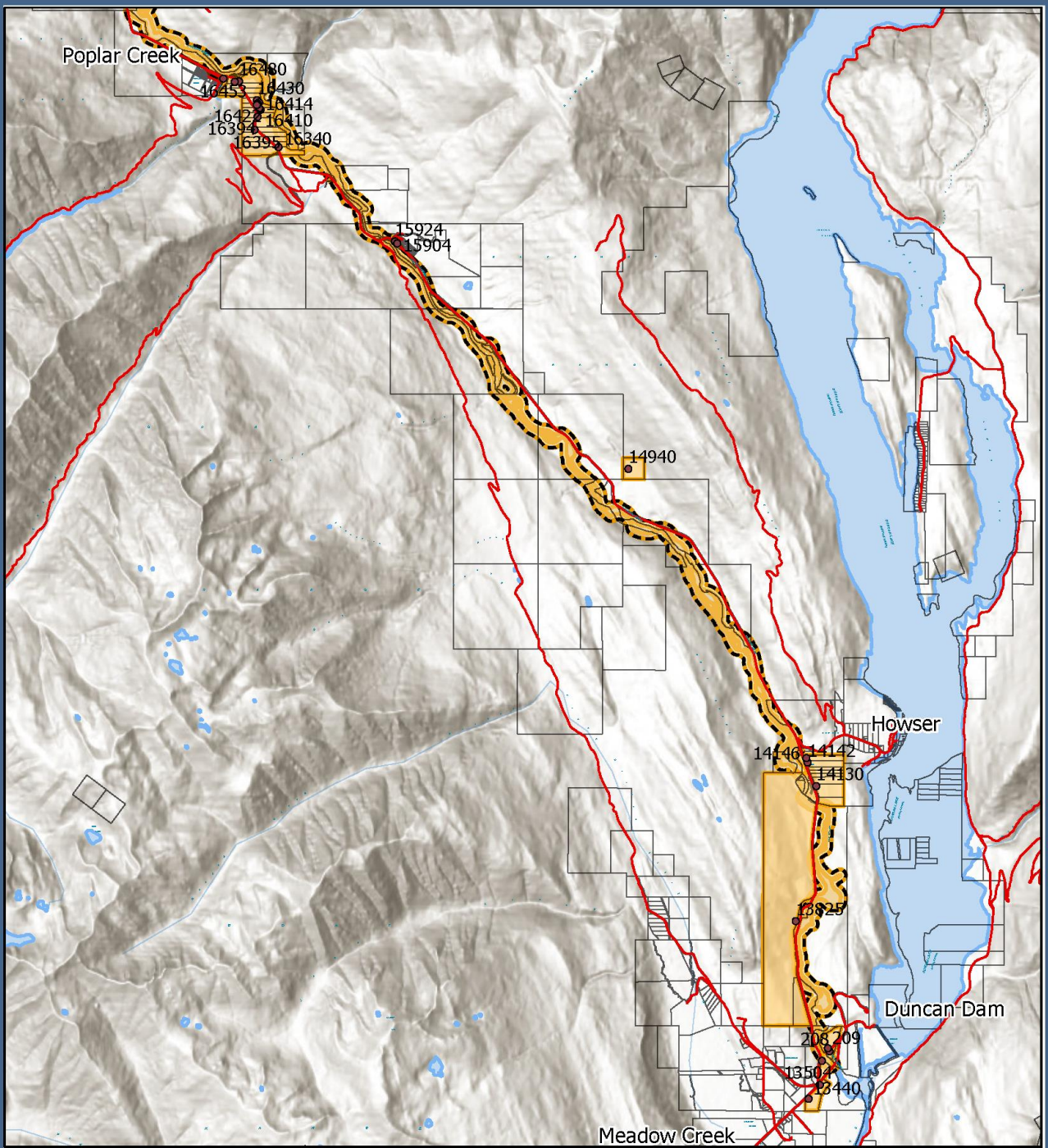
For more emergency about evacuations and emergency preparedness, along with other resources:

- [Current RDCK Evacuation Alerts, Orders and Rescinds](#) or call 250.352.7701
- Report flooding or any new hazards to the 24-hour toll-free provincial emergency number at 1.800.663.3456.
- [Sign up for RDCK Emergency Notification System to receive notifications](#)
- [RDCK web map](#)
- Follow the [BC River Forecast Centre](#) for flood warning and advisories
- [Public weather alerts for BC from Environment Canada](#)
- [Fortis BC Outage Map](#) or call 1.866.436.7847
- [BC Hydro outage map](#) or call 1.800.224.9376
- [Nelson Hydro](#) 1.877.324.9376
- [Drive BC](#) for highway closures and road conditions
- [Yellowhead Road and Bridge \(YRB\)](#) 1.888.630.1420
- [Prepared BC](#)

*Incorporated in 1965, the Regional District of Central Kootenay (RDCK) is a local government that serves 60,000 residents in 11 electoral areas and nine member municipalities. The RDCK provides more than 160 services, including community facilities, fire protection and emergency services, grants, planning and land use, regional parks, resource recovery and handling, transit, water services and much more. For more information about the RDCK, visit [www.rdck.ca](http://www.rdck.ca).*

**For media enquiries:**

EOC Information Officer  
Regional District of Central Kootenay  
Tel: 250.352-7701  
Email: [eocinfo@rdck.bc.ca](mailto:eocinfo@rdck.bc.ca)

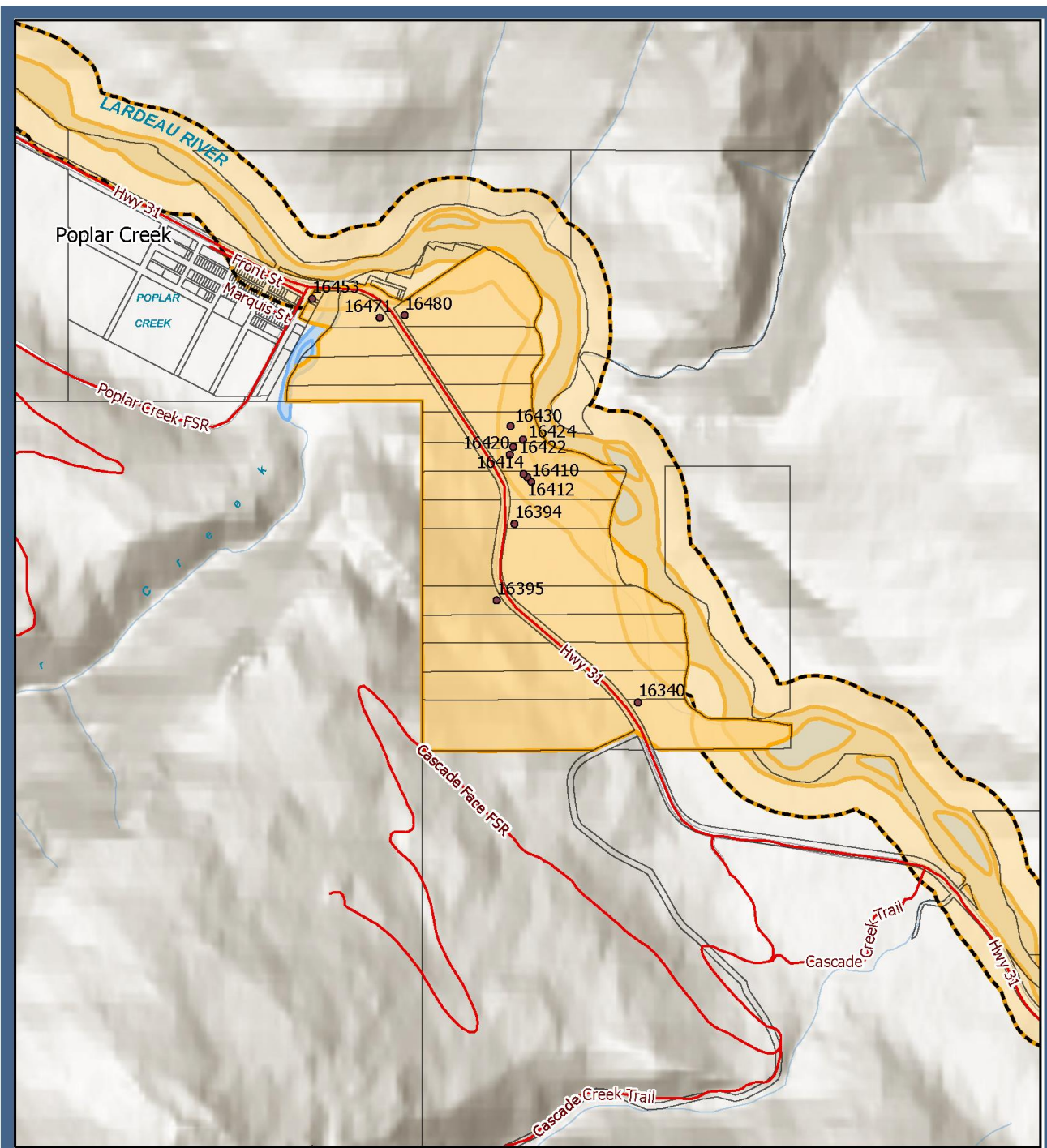


REGIONAL DISTRICT OF CENTRAL KOOTENAY  
 Box 590, 202 Lakeside Drive,  
 Nelson, BC V1L 5R4  
 Phone: 1-800-268-7325 www.rdck.bc.ca  
 maps@rdck.bc.ca

- Roads
- Cadastre - Legal Parcels
- Lakes and Rivers
- Address's In Alert Area

### Lardeau River Evacuation Alert

The mapping information shown are approximate representations and should only be used for reference purposes. The Regional District of Central Kootenay is not responsible for any errors or omissions on this map.

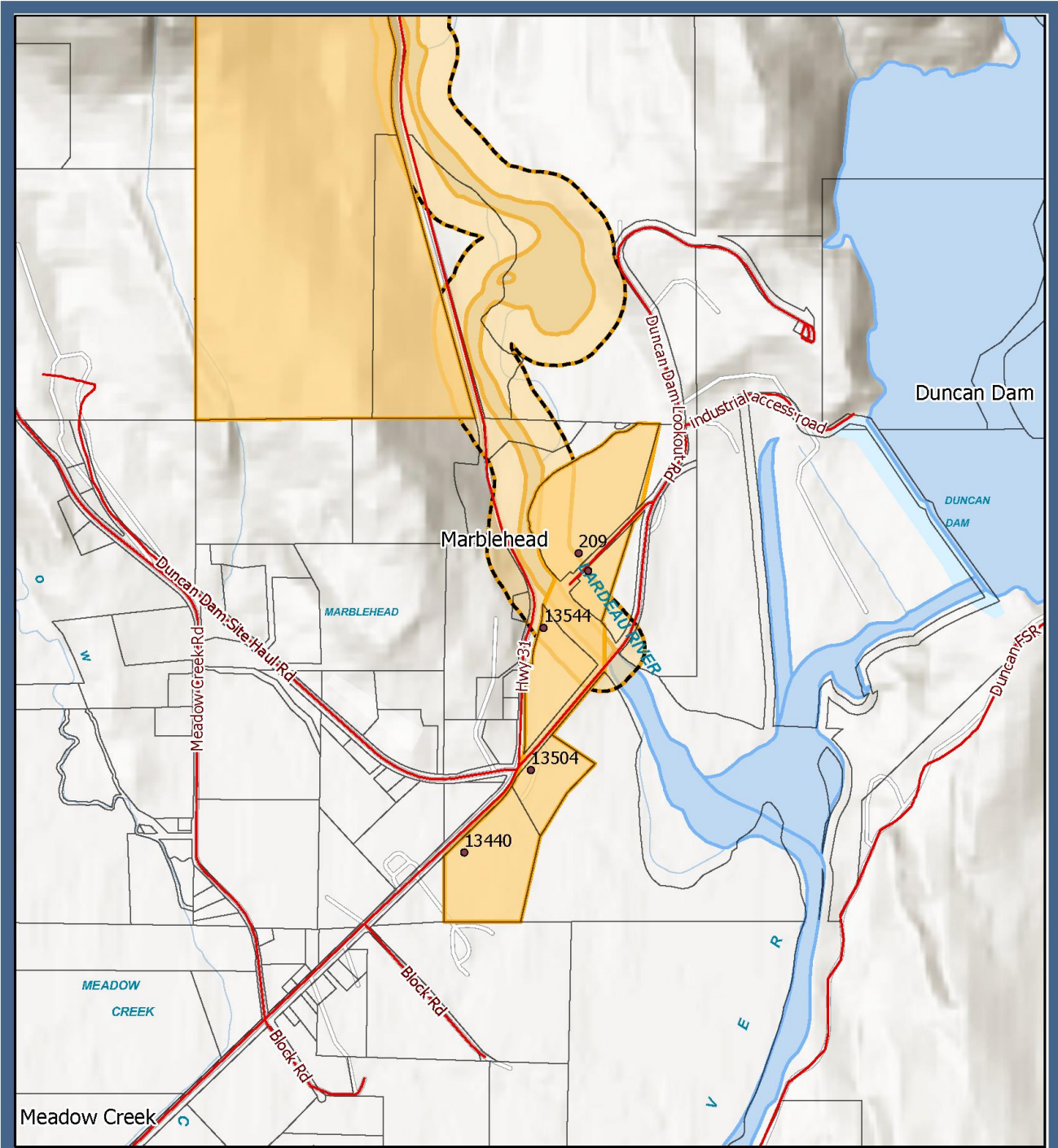


REGIONAL DISTRICT OF CENTRAL KOOTENAY  
 Box 590, 202 Lakeside Drive,  
 Nelson, BC V1L 5R4  
 Phone: 1-800-268-7325 www.rdck.bc.ca  
 maps@rdck.bc.ca

- Roads
- Cadastre - Legal Parcels
- Lakes and Rivers
- Address's In Alert Area

### Lardeau River Evacuation Alert

The mapping information shown are approximate representations and should only be used for reference purposes. The Regional District of Central Kootenay is not responsible for any errors or omissions on this map.



REGIONAL DISTRICT OF CENTRAL KOOTENAY  
 Box 590, 202 Lakeside Drive,  
 Nelson, BC V1L 5R4  
 Phone: 1-800-268-7325 www.rdck.bc.ca  
 maps@rdck.bc.ca

- Roads
- Cadastre - Legal Parcels
- Lakes and Rivers
- Address's In Alert Area

### Lardeau River Evacuation Alert

The mapping information shown are approximate representations and should only be used for reference purposes. The Regional District of Central Kootenay is not responsible for any errors or omissions on this map.